



Phoenix Contact Inc.
P.O. BOX 4100
Harrisburg, PA 17111-0100
Phone: 717-944-1300

Product Change Notification

PCN-IFC-7638-2022

Business Unit	Product Line Code	Type of Change	Action	Date of Issue
IFC - Industrial Field Connectivity	BF7	Product Change Notification	Notify Distributors and Field	3/4/2022

The following Phoenix Contact products have been modified. Existing specifications will be met or exceeded. Please review and acknowledge this document and inform your personnel as needed.

Description for Product Change Notification

For reasons of traceability and sourcing, we have made some slight modifications to the design of our RJ45 gender changer modular insert. This change has no impact on form, fit, or function.

Stock Status

Can existing stock still be used?	Yes
Is mixture of stock acceptable?	Yes

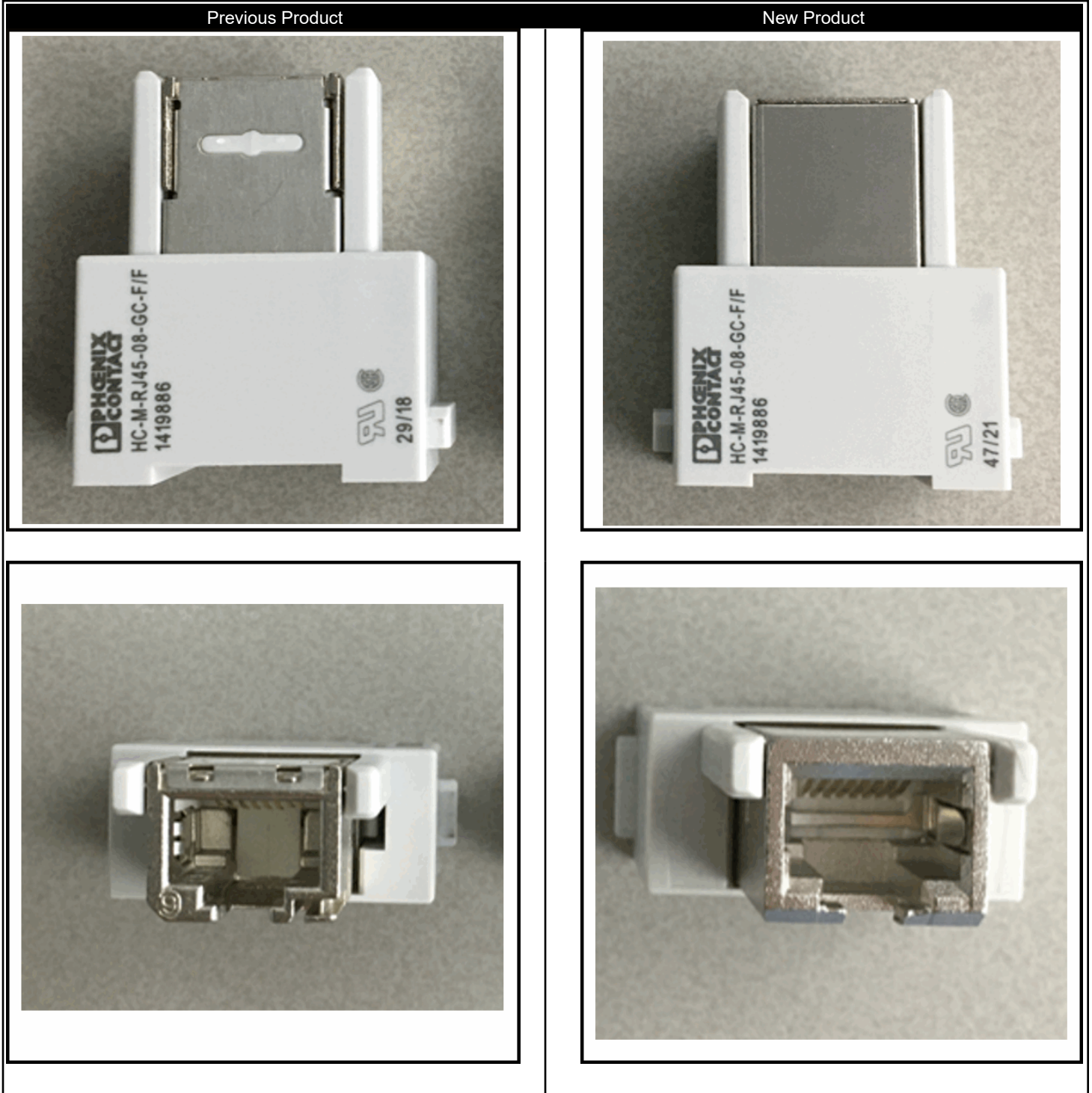
Transaction Dates

Date modification goes into effect from Germany:	12/21/2021
Expected first shipment (from Phoenix Contact) of the modified products(s):	12/21/2021



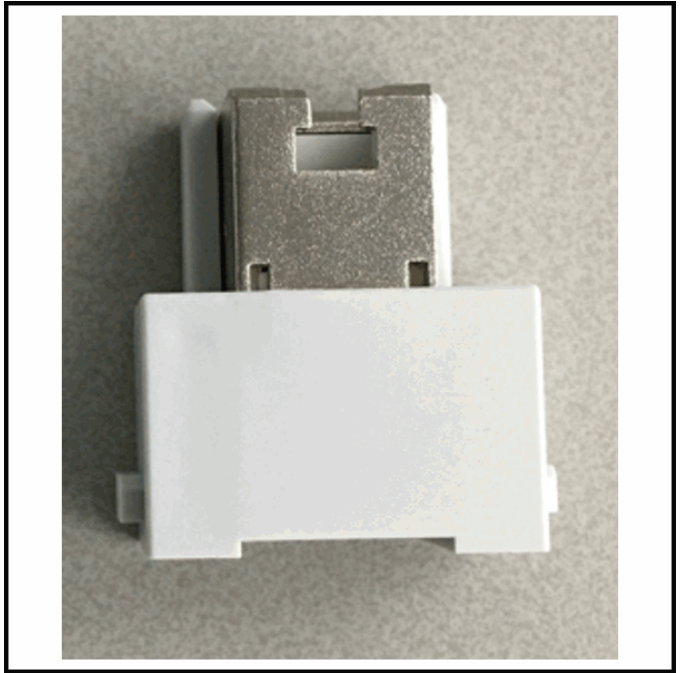
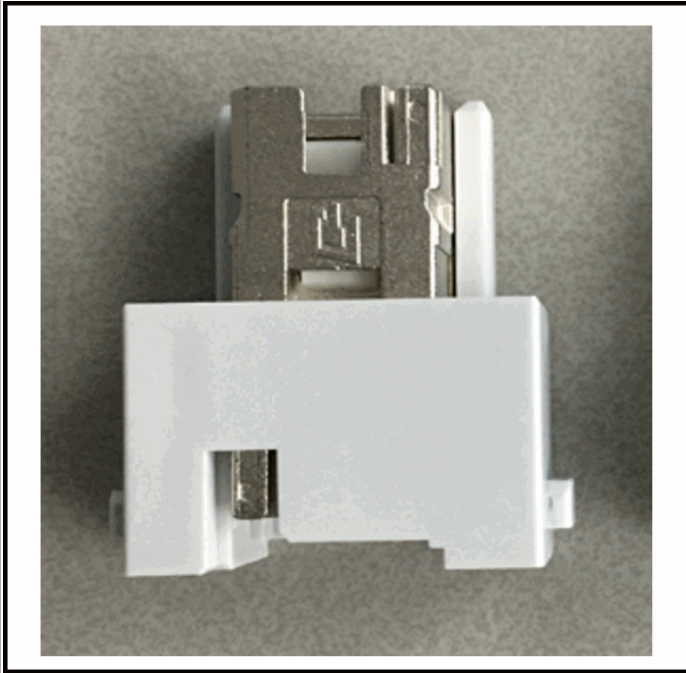
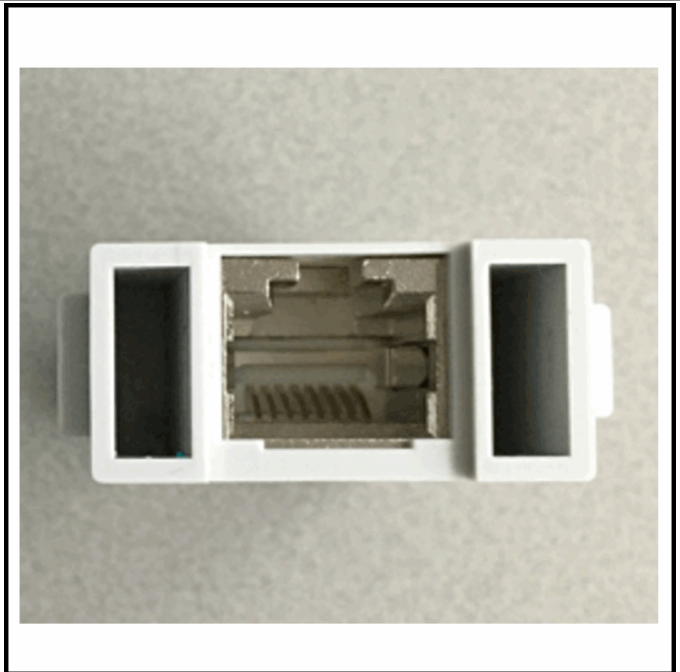
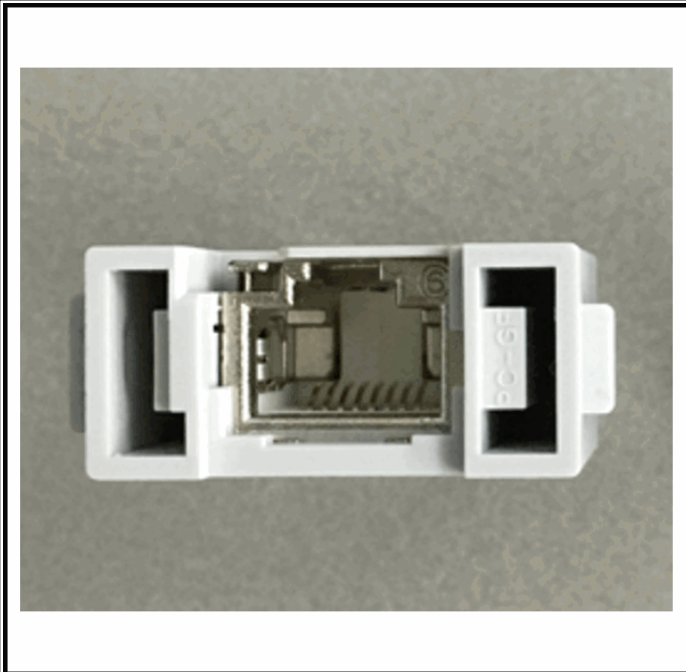
Phoenix Contact Inc.
P.O. BOX 4100
Harrisburg, PA 17111-0100
Phone: 717-944-1300

Product Change Notification



Phoenix Contact Inc.
P.O. BOX 4100
Harrisburg, PA 17111-0100
Phone: 717-944-1300

Product Change Notification





Phoenix Contact Inc.
P.O. BOX 4100
Harrisburg, PA 17111-0100
Phone: 717-944-1300

Product Change Notification



Should you have any issues with the timeline or content of this product change, please contact Phoenix Contact using the information below. Customers should acknowledge receipt of the PCN within 30 days of delivery of the PCN; provided, however, that the failure to acknowledge receipt does not affect the product change or the effective date thereof.

Contact Info:

Dean W Smith
dwsmith@phoenixcontact.com

Thank you,

Nathan Owens

Product Marketing Manager - IFC



Phoenix Contact Inc.
P.O. BOX 4100
Harrisburg, PA 17111-0100
Phone: 717-944-1300

Product Change Notification

Part #	Type Description
1419886	HC-M-RJ45-08-GC-F/F