

ACR-22-03-G-00.25-S-S1-P-1

ACCLIMATE™

ACR-22 SERIES

IP68 SEALED 22 mm PANEL ASSEMBLY

SPECIFICATIONS

For complete specifications see www.samtec.com?ACR-22

Terminal Material:
Brass

Contact Material:
Brass/BeCu

Operating Temp Range:
-10 °C to +105 °C

Housing:
-P: Thermoplastic

-M: Zinc Alloy

RoHS Compliant:
Yes

Yes

Yes

Yes

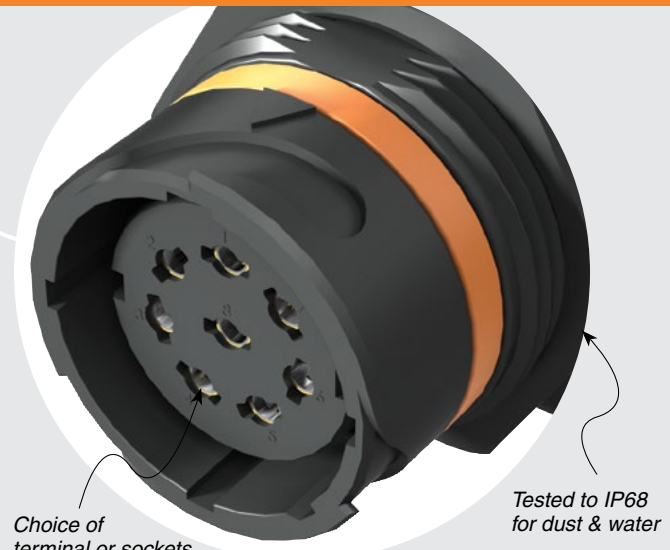
CURRENT RATING		
LEAD STYLE	PINS POWERED	CCC per PIN
-01	30	2.0 A
-02	20	2.3 A
-03	8	8.3 A

For general reference only. See www.samtec.com?ACR-22 for complete test data or contact AccliMate@samtec.com for applications requiring higher current carrying capacity.

Mates with:
ACP-22, ACPK-22



- Easy sealed cable solutions
- Build a standard or flexible custom online
- Calculate performance, current rating, voltage drop
- Live chat with AccliMate™ engineers for custom options
- Variety of shells, pin sizes, signal, power, I/O interfaces
- Assembly and field kits available



Choice of terminal or sockets

Tested to IP68 for dust & water

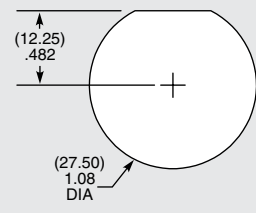
DUST CAPS

- DCA-ACR-22-M-X (Metal)
- DCA-ACR-22-P-X (Plastic)



- Visit sealedio.samtec.com for a complete list of sealed systems

PANEL OPENING



ALSO AVAILABLE (MOQ Required)

- Other assembly lengths

Note:
Some lengths, styles and options are non-standard, non-returnable.

ACR	22	LEAD STYLE	PLATING	LENGTH	END 1	END 2	HOUSING MATERIAL	KEYING OPTIONS												
		<p>-01 = 1.0 mm DIA (30) terminals or sockets (24 AWG)</p> <p>-02 = 1.0 mm DIA (20) terminals or sockets (24 AWG)</p> <p>-03 = 1.5 mm DIA (8) terminals or sockets (16 AWG)</p>	<p>-G = 10 μm (0.25 μm) Gold over 50 μm (1.27 μm) Ni on contact</p>	<p>-“XX.XX” = Length in meters (00.25 m min. to 50.00 m max.) Standard lengths</p>	<p>-T = Terminal</p> <p>-S = Socket</p>	<p>-P = Plastic</p> <p>-M = Metal</p>	<p>-1 = Orange, 45°</p>													
							<p>-BC = Blunt Cut</p> <p>-S1 = Connector determined by lead style. (Specify LEAD STYLE from chart)</p>													
								<table border="1"> <thead> <tr> <th>LEAD STYLE</th> <th>-S1 END 2</th> <th>MATES WITH -S1</th> </tr> </thead> <tbody> <tr> <td>-01</td> <td>MMSD (24 AWG)</td> <td>IPL1</td> </tr> <tr> <td>-02</td> <td></td> <td></td> </tr> <tr> <td>-03</td> <td>MPSS (16 AWG)</td> <td>MPT</td> </tr> </tbody> </table>	LEAD STYLE	-S1 END 2	MATES WITH -S1	-01	MMSD (24 AWG)	IPL1	-02			-03	MPSS (16 AWG)	MPT
LEAD STYLE	-S1 END 2	MATES WITH -S1																		
-01	MMSD (24 AWG)	IPL1																		
-02																				
-03	MPSS (16 AWG)	MPT																		

Due to technical progress, all designs, specifications and components are subject to change without notice.

WWW.SAMTEC.COM

All parts within this catalog are built to Samtec's specifications. Customer specific requirements must be approved by Samtec and identified in a Samtec customer-specific drawing to apply.