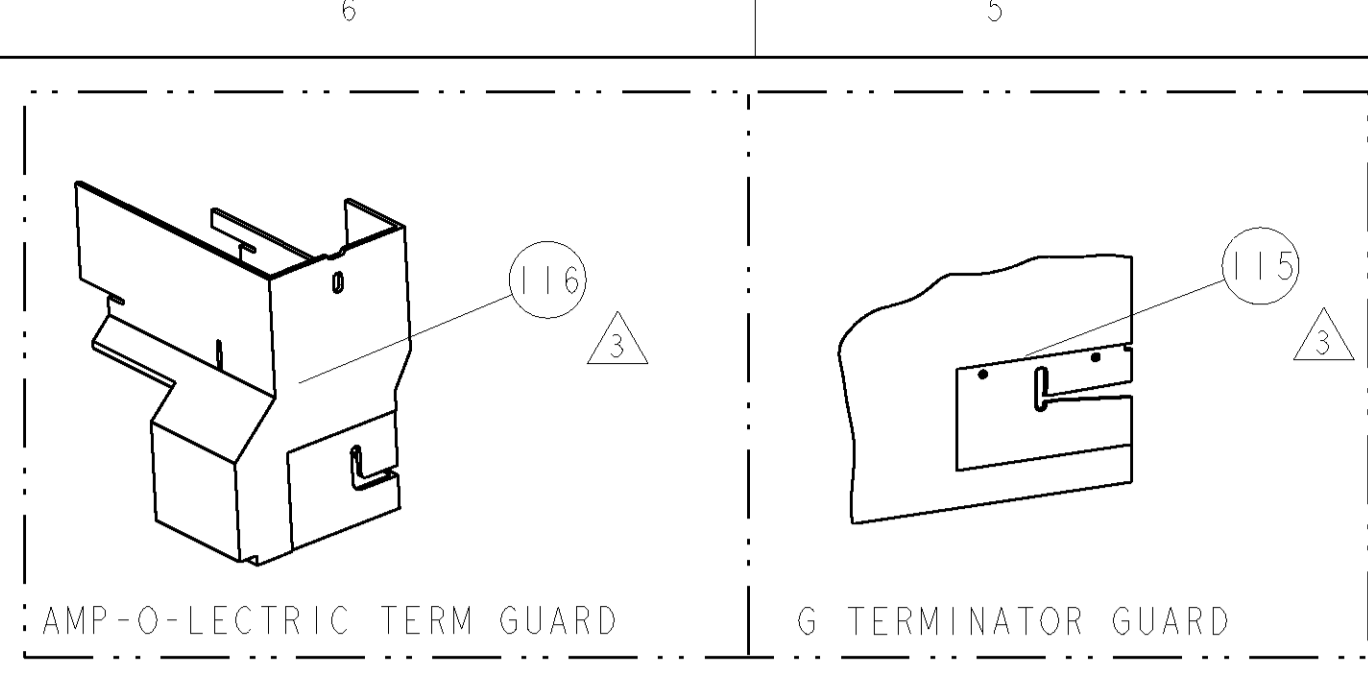


PART NUMBER	REV	FIRST USED	POWER UNIT	FEED TYPE	DESCRIPTION
1855335-1	A	122500-1	LEADMAKER	POST FEED	CUTS CARRIER
1855335-2	A	565435-5	BENCH MODEL K	PRE FEED	CUTS CARRIER
1855335-3	A	354500-1	BENCH MODEL G	PRE FEED	CUTS CARRIER
1855335-6	A	122500-1	LEADMAKER	POST FEED	CONTINUOUS CARRIER
7-1855335-7	A	-	-	-	SPARE PARTS

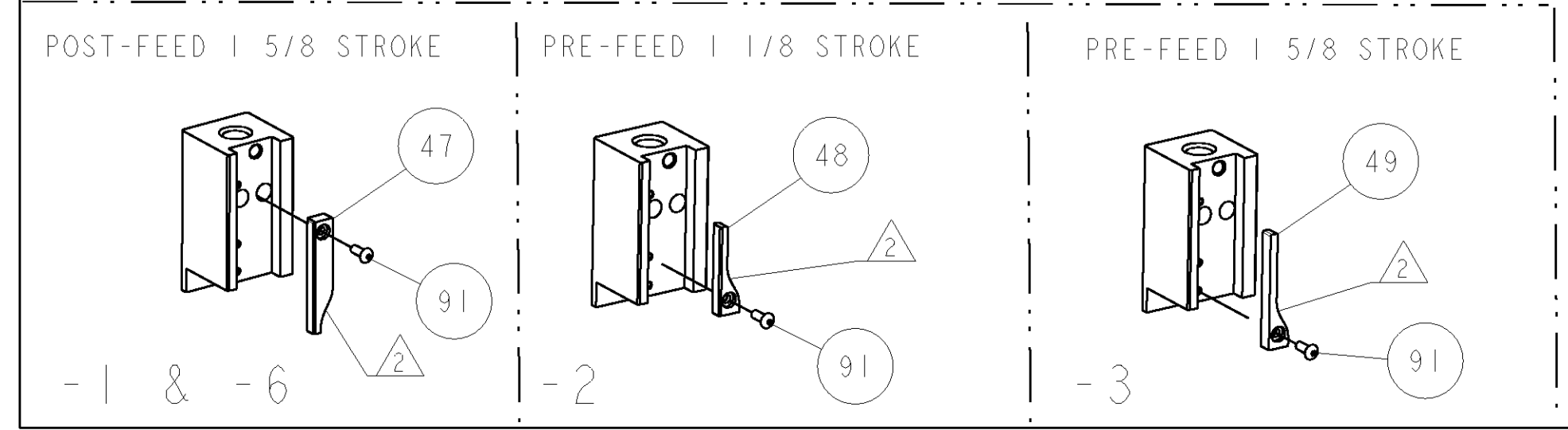
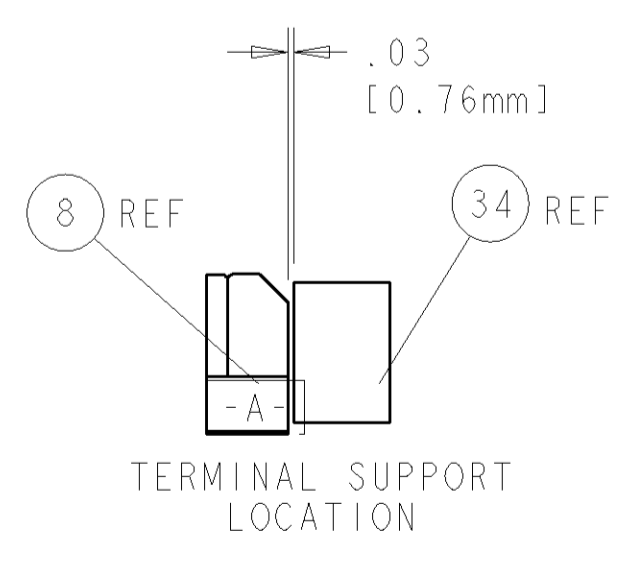
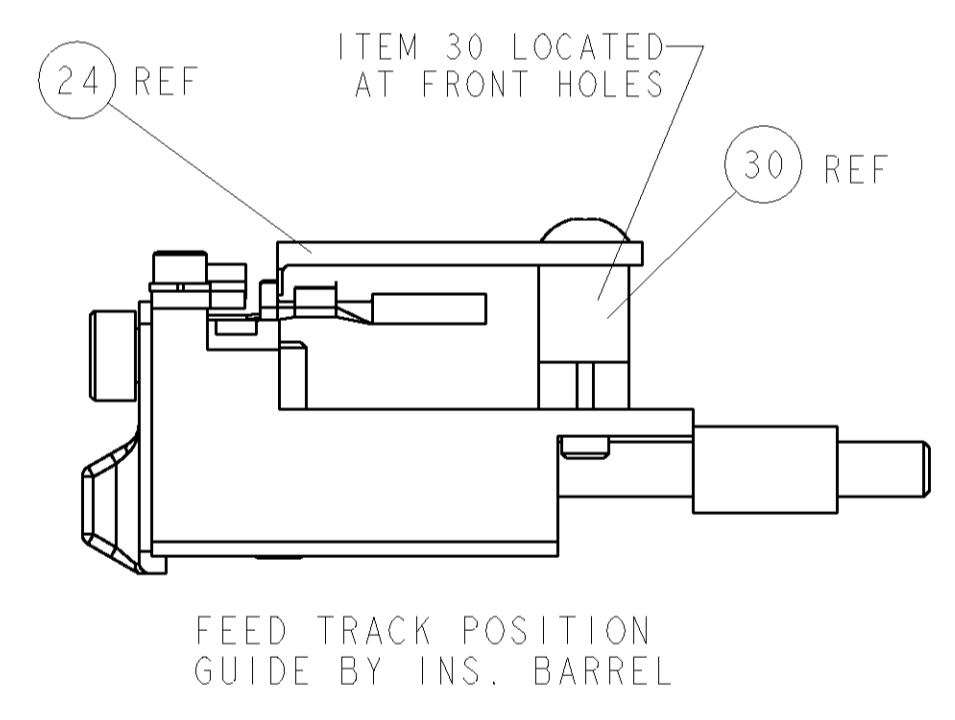
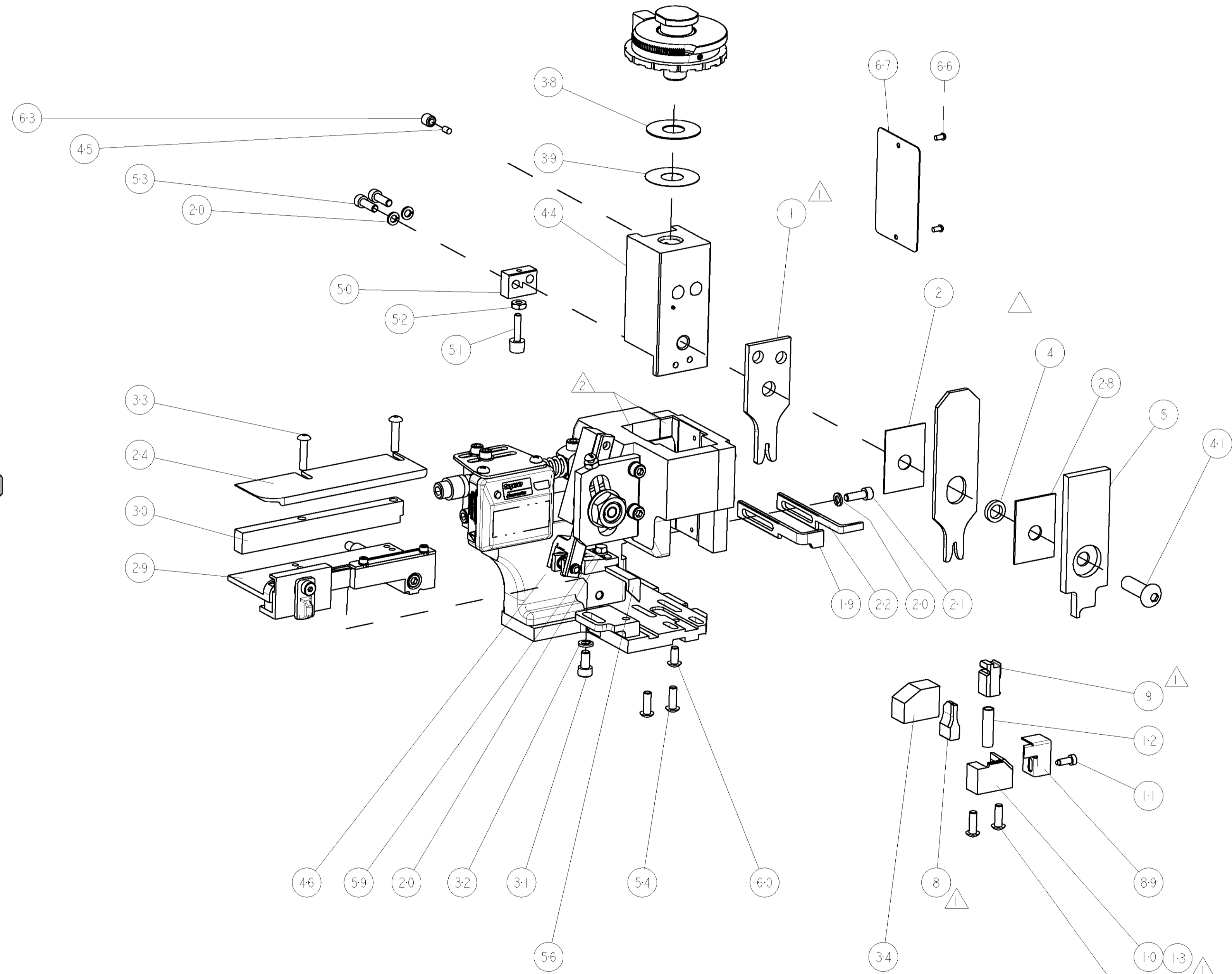


TE TERM PN		MANUF PN	FCI TERMINAL - FCI CRIMP SPECS		REF SETTING
1572764-1		211CC2S1243			
			CRIMP HEIGHT	WIRE SIZE	
			1.22±0.05mm [.048±.002]	18AWG or 0.75mm2	C 5
			CRIMP	SIZE	TYPE
				2.08mm [.082]	F
			WIRE	INSUL	OV
				2.54mm [.100]	Ø 1.34mm - 2.08mm
WIRE STRIP LENGTH		TERM APPL SPEC	FEED	APPLICATOR INSTRUCTIONS	
4.67-5.46		-	15.32	408-8040	
				SET UP GAGE	
				458637-1	

LOC	DIST	P LTR	DESCRIPTION	DATE	BY	APPD
A	66		SEE ECO-07-023399	040CT2007	LJL	TE

- △ RECOMMENDED SPARE PARTS
- △ GREASE LIGHTLY
- △ GUARD MUST BE IN PLACE WHEN OPERATING APPLICATOR IN A BENCH MACHINE
- △ CRIMP DATA SUPPLIED BY TERMINAL MANUFACTURER.

**\* WARNING**  
ON INSTALLATION, SET WIRE DISC TO LARGEST WIRE SIZE SETTING. USE OF SETTINGS BELOW MIN. REQUIRED CRIMP HEIGHT SETTING WILL CAUSE DAMAGE TO CRIMP TOOLING.



QTY	REF	DESCRIPTION	ITEM NO
1	REF	GUARD WINDOW	116
1	REF	INSERT, GUARD	115
1		SCR, BTN SKT HD CAP 6-32 X .375	91
1		GUARD, FRONT CHIP	89
1		SF APPL INST 408-8040	72
1		GENERAL INSTRUCTION PKG	71
1		PLATE, IDENTIFICATION	67
2		SCREW, DRIVE	66
1		SCR, SET, SELF LOCKING 1/4-20 X .250	63
1		SCR, BHSC, SELF-LOCKING, 8-32 X .375	60
1		SCR, HEX HD CAP 8-32 X .312	59
1		PAWL, FEED	56
4		SCR, BTN SKT HD CAP 8-32 X .500	54
2		SCR, SKT HD CAP 8-32 X .500	53
1		NUT, HEX, REG 6-32	52
1		BUMPER, HOLD DOWN	51
1		SPACER, TONKER	50
1		CAM, PRE FEED, 1 5/8	49
1		CAM, PRE FEED, 1 1/8	48
1		CAM, POST FEED, 1 5/8	47
1		APPL. BASIC SUB ASSY (SIDE WISE MOCA)	46
1		PLUG, NYLON	45
1		RAM, SIDE FEED	44
1		SCR, BTN SKT HD CAP 5/16-24 X 1.00	41
1		SHIM SUB-ASSY	39
1		SHIM	38
1		FINE ADJUST HEAD ASSEMBLY	37
1		TERMINAL SUPPORT	34
2		SCR, BTN SKT HD CAP 8-32 X .750	33
1		WASHER, SPRG LOCK, REG NO 10	32
1		SCR, SKT HD CAP 10-32 X .375	31
1		SPACER, STRIP GUIDE	30
1		ASSEMBLY, STRIP GUIDE	29
1		SPACER, CRIMPER	28
1		PLATE, STRIP GUIDE	24
1		STRIPPER	22
1		SCR, SKT HD CAP 8-32 X .500	21
4		WASHER, SPRG LOCK, REG NO 8	20
1		STRIPPER	19
1		SHEAR HOLDER, FRONT (NO CUT)	13
1		SPRING, COMPRESSION	12
1		STOP, SHEAR	11
1		SHEAR HOLDER, FRONT	10
1		FLOATING SHEAR, FRONT	9
1		ANVIL, COMBINATION	8
-		-	7
-		-	6
1		DEPRESSOR, SHEAR	5
1		BLOCK, CRIMPER SPACER	4
1		CRIMPER, INSULATION OVERLAP	3
1		SPACER, CRIMPER	2
1		CRIMPER, WIRE PREMIUM	1

DIMENSIONS: INCHES		TOLERANCES UNLESS OTHERWISE SPECIFIED:	
0 PLC	±	1 PLC	±0.1
1 PLC	±0.1	2 PLC	±0.01
3 PLC	±0.001	4 PLC	±0.0001
MATERIAL		FINISH	
CUSTOMER DRAWING		SCALE 3:5 SHEET 1 OF 1 REV A	

CUSTOMER VIEWABLE ASSEMBLY